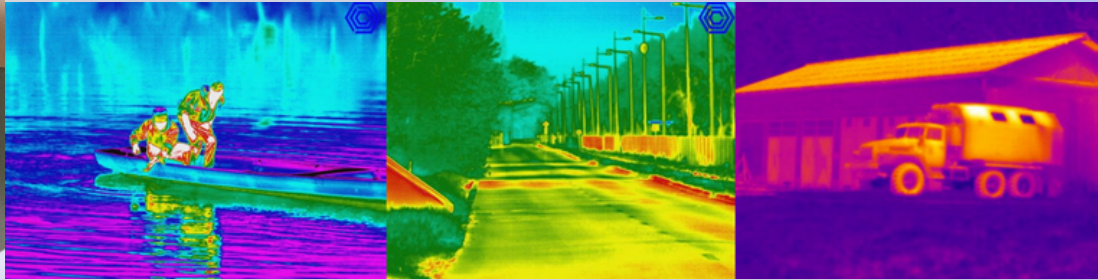


MISCELLANEOUS

JUMBO

CAMERA PLATFORM AND COOLED MULTISPECTRAL RECONNAISSANCE SYSTEM



BENEFITS

- Effectively supports the work of defense specialists and decision-makers in professional border protection and territory protection.
- Its most important element is the long-range electro-optical system (cooled thermal camera, D/N camera, laser rangefinder, P/T rotation unit).
- Jumbo performs observations in visible, extended "visible" and far-infrared ranges.
- Main Reference User: Hungarian National Police

SPECIFICATIONS

Movement Unit	
Pan movement:	n x 360°
Tilt movement:	-45°...+10°
Laser Range Finder	
Wavelength	1520-1580nm
Measurement range	50m-20000m
Thermal Imager	
Resolution	1280 x 720 pixel
Detection range	>14.500m (1,7mx0,6m); >25.000m (2,3mx2,3m)
Day/Light Camera	
Resolution	1920x1080 pixel
Detection range	>14.500m (1,7mx0,6m); >25.000m (2,3mx2,3m)



HUNGARIAN DEFENCE EXPORT AGENCY

Export Promotion
Exhibitions
Sales
G2G



CONTACTS



H - 1011 Budapest,
Fő u. 14-18. Building A.



+36 1 201 3271



vexhungary@vexhungary.com



MANUFACTURER

Medirlab Ltd. - Hungary



MINISTRY OF DEFENCE
HUNGARY

WWW.VEXHUNGARY.COM